



FORT LAUDERDALE, FLORIDA

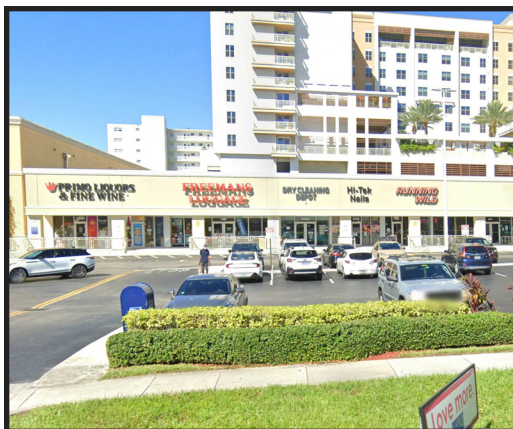
# Galleria Plaza

2541 - 2595 E. Sunrise Boulevard  
Fort Lauderdale, Florida 33304

**LAT:** 26.138636 | **LONG:** -80.111466

**GLA:** 24,807 SQ. FT

**TRAFFIC COUNTS:** 28,000 DAILY



**Galleria Plaza is a 25,000 square foot center located on E. Sunrise Boulevard, directly across from the Galleria Mall, in Fort Lauderdale, Florida.**

The Center is shadow-anchored by Publix and Starbucks and offers great visibility for all tenants from busy E. Sunrise Boulevard. Across the street, the Galleria Mall is home to Apple, Dillard's, H&M, Macy's, Sephora, and stand out restaurants such as Blue

Martini, Cooper's Hawk, P.F. Chang's, Seasons 52 and The Capital Grille. The surrounding trade area is densely populated with over 270,000 residents within a 5-mile radius with an average household income of approximately \$213,000 within a 1-mile radius.

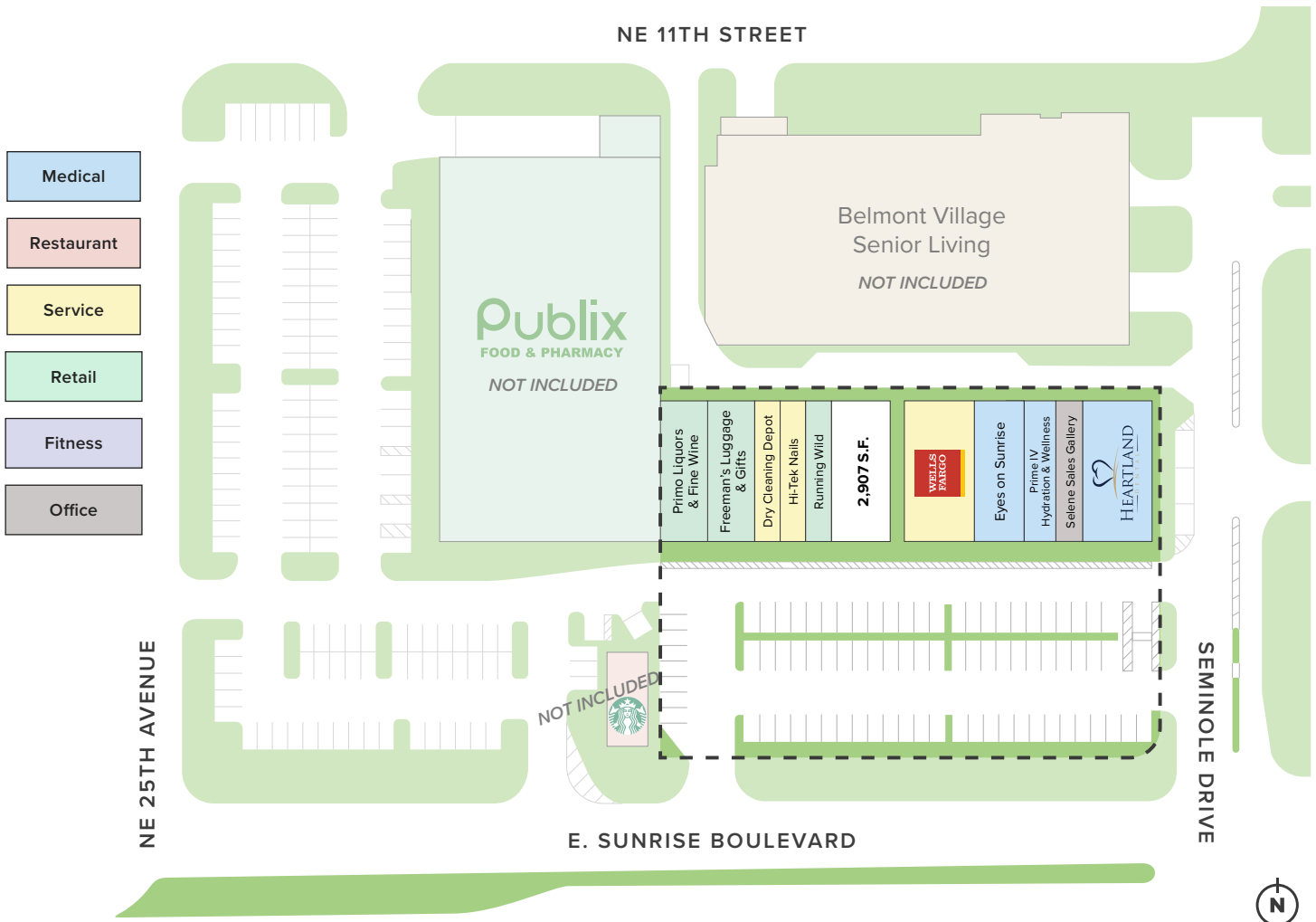
## NOW LEASING!

**Leasing Agent: Sandi Rogacki**

(954) 821-4222 | [srogacki@woolbright.net](mailto:srogacki@woolbright.net)

# GALLERIA PLAZA

Fort Lauderdale, FL



## 2025 est. Demographics

	1 Mile	3 Mile	5 Mile
POPULATION	15,293	136,218	270,473
HOUSEHOLDS	8,115	69,336	125,494
AVERAGE HOUSEHOLD INCOME	\$213K	\$167K	\$142K
MEDIAN AGE	52	48	45
DAYTIME EMPLOYMENT	11,208	112,215	218,310
TRAFFIC COUNTS	28,000 Cars Daily		

### Key Tenants

- ▶ Wells Fargo
- ▶ Heartland Dental
- ▶ Prime IV Hydration & Wellness
- ▶ Primo Liquors
- & Fine Wine
- ▶ Hi-Tek Nails
- ▶ Eyes on Sunrise
- ▶ Freeman's Luggage & Gifts

# NOW LEASING!

WOOLBRIGHT DEVELOPMENT, INC.

3200 N. Military Trail, 4th Floor, Boca Raton, FL 33431 / 561-989-2240 / [woolbright.net](http://woolbright.net)